

new  
media™

New Media™  
Plates & Modules





Solutions for all Manner of Media Cabling Problems

## Contents

New Media™ Plates	k5	The modern home is now more than a mere home. It doubles up occasionally as a cinema, concert hall, meeting venue and computer room etc.. Each of these functions brings with it its own unique requirements in terms of the provision of necessary services such as telephone or satellite sockets etc.
Deco Plus® Unfurnished Plates	k9	
Deco® Unfurnished Plates	k10	
Define® Unfurnished Plates	k11	
Definity™ Unfurnished Plates	k12	Even in recent memory designers and builders did not think beyond providing a perfunctory level of electrical switches, sockets and pendant light fittings in a new home.
Mode® Unfurnished Plates	k13	
Part M™ Unfurnished Plates	k13	
Polar™ Unfurnished Plates	k13	
Metal Clad Unfurnished Plates	k14	Nowadays, as well as providing an ever increasing number of these items, provision must be made for the myriad different electrical and electronic products which proliferate our homes.
New Media™ Modules	k16	
Typical Sky+ Installation	k24	
Typical Sky+ HD Installation	k25	
Technical Details	k26	

Traditionally, products such as telephone and TV coaxial sockets etc. have all been supplied built into a standard size wall plate. The environment in today's office and home however requires a number of services to be provided to a specific work station or convenient access point. The most flexible and efficient means of doing this is the use of modules on a multiple aperture plate.

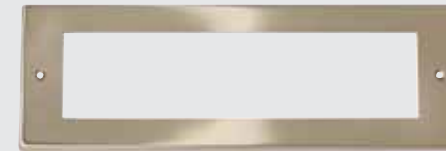
The New Media™ range illustrated in the following pages encompasses a wide range of media and power modules, providing the designer and installer a host of solutions for all manner of media cabling problems.

# New Media™ Plates

The brief given to our designers charged with the task of developing the New Media™ range was to produce a comprehensive yet flexible and user friendly 'system' which enables the installer to easily create topical media and power cabling solutions.

All of the modules featured in this brochure are of the standard euro grid configuration based on 1 aperture modules of 25 x 50mm. Mounting plates are available as wall or floor plates and can accommodate 1 – 16 modules according to requirements.

Instead of numerous unsightly individual sockets, a single New Media™ plate can be used at a convenient point to bring together any combination of media modules. The individual modules are available in black or white finish and are suitable for mounting on blank plates from selected accessory ranges, namely the Polar™ and Mode® moulded accessory ranges, the Click® metal clad range plus the Deco®, Define® and Definity™ decorative metal ranges.



MP508



MP608



The furnished plates illustrated above contain 6 x 1 aperture and 1 x 2 aperture media modules (above) and 4 x 2 aperture 13A socket outlet modules (above).

New Media™ Back box MP520 required, see page k8.

#### Small Unfurnished Front Plates - 8 Apertures

- MP508AB** Small New Media™ Unfurnished Front Plate - 8 Apertures - Antique Brass
- MP508BR** Small New Media™ Unfurnished Front Plate - 8 Apertures - Polished Brass
- MP508PN** Small New Media™ Unfurnished Front Plate - 8 Apertures - Pearl Nickel
- MP508SB** Small New Media™ Unfurnished Front Plate - 8 Apertures - Satin Brass

The yoke 'MP510' is required to mount the media modules into prior to assembling the frontplate, see page k8.

#### Small New Media™ Unfurnished Front Plate & Yoke - 8 Apertures

- CMA608** Small New Media™ Unfurnished Front Plate & Yoke - 8 Apertures - White
- MP608\*\*** Small New Media™ Unfurnished Front Plate & Yoke - 8 Apertures

**Back Box Depth:** 47mm Minimum

**Dimensions:** 250mm x 87mm x 8mm CMA608: 248mm x 86mm x 9.5mm

Understanding the code:

**MP** - Plate Style **508** - Product No. **BN** - Plate Finish. AB Antique Brass, BR Polished Brass, SB Satin Brass, CH Polished Chrome, SC Satin Chrome, BN Black Nickel, PN Pearl Nickel, BS Brushed Stainless, SS Stainless Steel, PW Polar White



MP516



The furnished plate illustrated above contains 8 single New Media™ modules (top row) and 4 twin width socket outlet modules (bottom row).

The yoke 'MP510' (x2) is required to mount the media modules into prior to assembling the frontplate, see page k8.

Back box MP525 required, see page k8.



MP616

**Large Unfurnished Front Plates - 2 x 8 Apertures**

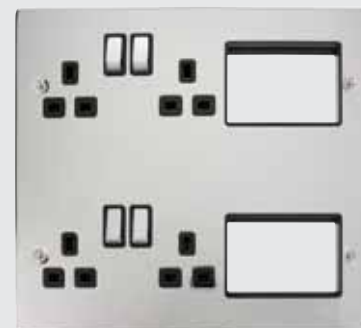
- MP516AB** Large New Media™ Unfurnished Front Plate - 2 x 8 Apertures - Antique Brass
- MP516BN** Large New Media™ Unfurnished Front Plate - 2 x 8 Apertures - Black Nickel
- MP516BR** Large New Media™ Unfurnished Front Plate - 2 x 8 Apertures - Polished Brass
- MP516BS** Large New Media™ Unfurnished Front Plate - 2 x 8 Apertures - Brushed Stainless
- MP516CH** Large New Media™ Unfurnished Front Plate - 2 x 8 Apertures - Polished Chrome
- MP516PN** Large New Media™ Unfurnished Front Plate - 2 x 8 Apertures - Pearl Nickel
- MP516SS** Large New Media™ Unfurnished Front Plate - 2 x 8 Apertures - Stainless Steel

**Large New Media™ Unfurnished Front Plate & Yoke - 2 x 8 Apertures**

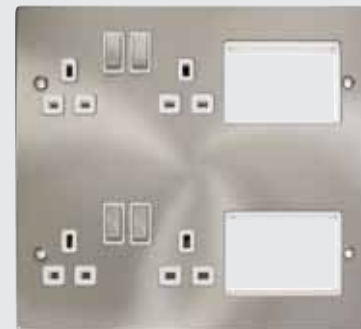
- CMA616** Large New Media™ Unfurnished Front Plate & Yokes - 2 x 8 Apertures - White
- MP616\*\*** Large New Media™ Unfurnished Front Plate & Yoke - 2 x 8 Apertures

**Back Box Depth:** 35mm Minimum  
**Dimensions:** 250mm x 216mm x 8mm CMA616: 248mm x 214mm x 9.5mm

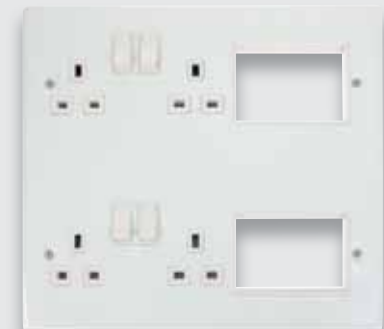
Understanding the code:  
**MP** - Plate Style **508** - Product No. **BN** - Plate Finish. AB Antique Brass, BR Polished Brass, SB Satin Brass, CH Polished Chrome, SC Satin Chrome, BN Black Nickel, PN Pearl Nickel, BS Brushed Stainless, SS Stainless Steel, PW Polar White



MP606CHBK



MP606SCWH



MP606PW

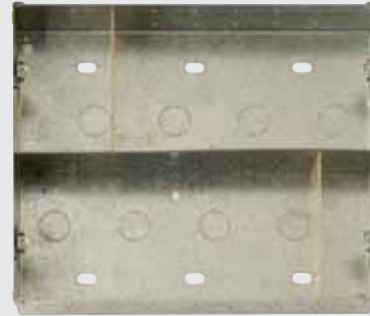
All plates supplied with black and white gaskets where applicable.  
 Product is supplied with 4 x 13A DP switched sockets. Back box MP525 or MP535 required, see following page.

**2 Tier Semi-Modular Unfurnished Plates**

- MP606\*\*** Large New Media™ Part Furnished Front Plate - 4 x 13A DP Switched Sockets & 2 x 3 Apertures  
 \*Available in Chrome (CH), Satin Chrome (SC) and Polar™ White (PW)

**Back Box Depth:** 35mm Minimum **Cable Sizes:** 13A 4 x 2.5mm  
**Dimensions:** 250mm x 216mm x 8mm

Understanding the code:  
**MP** - Plate Style **508** - Product No. **BN** - Plate Finish. CH Polished Chrome, SC Satin Chrome, PW Polar White



MP525



MP510



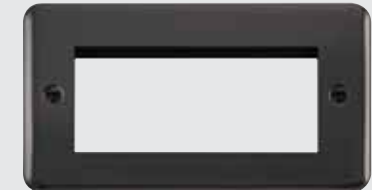
MP520



DPCH310



DPSB311



DPBN312



**Yoke**

**MP510** New Media™ Yoke - 8 Apertures

**Divider Plates**

**MP521** Divider Plate 47mm Deep for MP520 (76mm x 44mm)

**MP526** Divider Plate 47mm Deep for MP525 (93mm x 44mm)

**MP536** Divider Plate 35mm Deep for MP535

**Back Boxes**

**MP520** 47mm Deep New Media™ Back Box - 8 Apertures

**MP525** 47mm Deep New Media™ Back Box With Central Divider - 2 x 8 Apertures

**MP535** 35mm Deep New Media™ Back Box With Central Divider - 2 x 8 Apertures

Galvanised steel back boxes supplied for flush mounting of media plates. Mounting yoke facilitates pre-assembly of required modules. Fitted with twin earth terminals.

Divider plates can be installed as necessary in order to screen sensitive modules.

**Dimensions:** MP521: (76mm x 44mm) MP526: (93mm x 44mm)  
**Cutout Sizes:** 520: 225mm x 75mm 525: 225mm x 194mm

**Unfurnished Plates - New Media™**

**DP\*\*310** 1 Gang New Media™ Unfurnished Plate - 1 Aperture

**DP\*\*311** 1 Gang New Media™ Unfurnished Plate - 2 Apertures

**DP\*\*312** 2 Gang New Media™ Unfurnished Plate - 4 Apertures

Please add 2 letter prefix to identify required finish i.e. DPCH311 for polished chrome.

**Back Box Depth:** Dependant on modules used  
**Dimensions:** 1 Gang: 88mm x 88mm x 8mm, 2 Gang: 148mm x 88mm x 8mm,

Understanding the code:

**DP** - Plate Style **BN** - Plate Finish **311** - Product No.

AB Antique Brass, BR Polished Brass, SB Satin Brass, CH Polished Chrome, SC Satin Chrome, BN Black Nickel, SS Stainless Steel.



VPAB310



VPBN311



VPCH312



FPBS310



FPCH311



FPPN312



**Unfurnished Plates - New Media™**

- VP\*\*310** 1 Gang New Media™ Unfurnished Plate - 1 Aperture
- VP\*\*311** 1 Gang New Media™ Unfurnished Plate - 2 Apertures
- VP\*\*312** 2 Gang New Media™ Unfurnished Plate - 4 Apertures

Please add 2 letter prefix to identify required finish i.e. VPCH311 for Polished Chrome.

**Back Box Depth:** 310, 311, 312: Dependant on module used MP606: 47mm Minimum  
**Dimensions:** 1 Gang: (88mm x 88mm x 8mm), 2 Gang: (146mm x 88mm x 8mm)

Understanding the code:  
**VP** - Plate Style **BN** - Plate Finish **311** - Product No. **BK** - Insert Colour. Please note: AB & BN are only available with black inserts.  
 AB Antique Brass, BR Polished Brass, SB Satin Brass, CH Polished Chrome, SC Satin Chrome,  
 BN Black Nickel, SS Stainless Steel, PN Pearl Nickel, GCBR Georgian Style.



**Unfurnished Plates - New Media™**

- FP\*\*310** 1 Gang New Media™ Unfurnished Plate - 1 Aperture
- FP\*\*311** 1 Gang New Media™ Unfurnished Plate - 2 Apertures
- FP\*\*312** 2 Gang New Media™ Unfurnished Plate - 4 Apertures

Please add 2 letter prefix to identify required finish i.e. FPCH311 for polished chrome.

**Back Box Depth:** 310, 311, 312: Dependant on module used MP606: 47mm Minimum  
**Dimensions:** 1 Gang: (88mm x 88mm x 1.3mm\*), 2 Gang: (146mm x 88mm x 1.3mm\*) \*Excluding gasket

Understanding the code:  
**FP** - Plate Style **BN** - Plate Finish **311** - Product No. **BK** - Insert Colour.  
 BS Brushed Stainless, BN Black Nickel, PN Pearl Nickel, CH Polished Chrome and SS Stainless Steel





SIN310BK

SIN311BK

SIN312BK



SCP310CH

SCP311SS

SCP312BS



CMA310

CMA311AG

PRW312

**definity™** Please refer to page "New Media™ Plates" on page e52 for more information.

**MODE® Part M Range™ polar™**

**New Media™ Unfurnished Plate Inserts**

- SIN310BK** 1 Gang New Media™ Unfurnished Plate Insert - 1 Aperture
- SIN311BK** 1 Gang New Media™ Unfurnished Plate Insert - 2 Apertures
- SIN312BK** 2 Gang New Media™ Unfurnished Plate Insert - 4 Apertures

**New Media™ Cover Plates**

- SCP310** 1 Gang New Media™ Cover Plate - 1 Aperture
- SCP311** 1 Gang New Media™ Cover Plate - 2 Apertures
- SCP312** 2 Gang New Media™ Cover Plate - 4 Apertures

**Back Box Depth:** Dependant on module used **Dimensions:** 1 Gang: (86mm x 86mm x 4mm), 2 Gang: (146mm x 86mm x 4mm)

Understanding the code:  
**SIN** - Insert Prefix **311** - Product No **BK** - Insert Colour **SS** - 'INGOT' Switch Finish (if applicable).  
**SCP** - Definity™ Cover Plate Prefix **311** - Product No **SS** - Plate Colour. Definity™ plates are coated stainless steel  
 CH Chrome, SS Stainless Steel, BS Brushed Stainless, PW Polar White, BK Black, RD Red

**Mode® Unfurnished Plates - New Media™**

- CMA310** 1 Gang New Media™ Unfurnished Plate - 1 Aperture
- CMA311** 1 Gang New Media™ Unfurnished Plate - 2 Apertures
- CMA312** 2 Gang New Media™ Unfurnished Plate - 4 Apertures

**Part M™ Range Unfurnished Plates - New Media™**

- CMA310AG** 1 Gang New Media™ Unfurnished Plate - 1 Aperture
- CMA311AG** 1 Gang New Media™ Unfurnished Plate - 2 Apertures
- CMA312AG** 2 Gang New Media™ Unfurnished Plate - 4 Apertures

**Polar™ Unfurnished Plates - New Media™**

- PRW310** 1 Gang New Media™ Unfurnished Plate - 1 Aperture
- PRW311** 1 Gang New Media™ Unfurnished Plate - 2 Apertures
- PRW312** 2 Gang New Media™ Unfurnished Plate - 4 Apertures

**Back Box Depth:** Dependant on module used  
**Dimensions:** Mode® & Part M™: 1 Gang: (86mm x 86mm x 9.5mm), 2 Gang: (146mm x 86mm x 9.5mm)  
 Polar™: 1 Gang: (86mm x 86mm x 11mm), 2 Gang: (146mm x 86mm x 11mm)

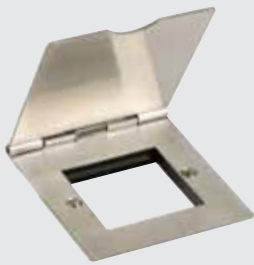




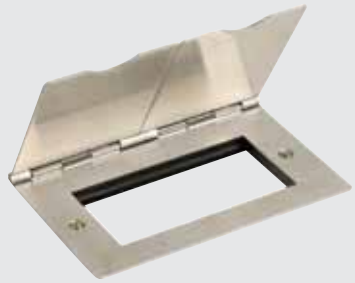
CL311



CL312



FS311SS



FS312SS

## essentials™

### Unfurnished Plates - New Media™

**CL311** 1 Gang New Media™ Unfurnished Plate - 2 Apertures

**CL312** 2 Gang New Media™ Unfurnished Plate - 4 Apertures  
Plates Complete With 40mm Deep Back Box  
For more Back Boxes see page m22

### Unfurnished Floor Plates - For Use With New Media™ Modules

**FS311SS** 1 Gang New Media™ Unfurnished Floor Plate - 2 Apertures

**FS312SS** 2 Gang New Media™ Unfurnished Floor Plate - 4 Apertures

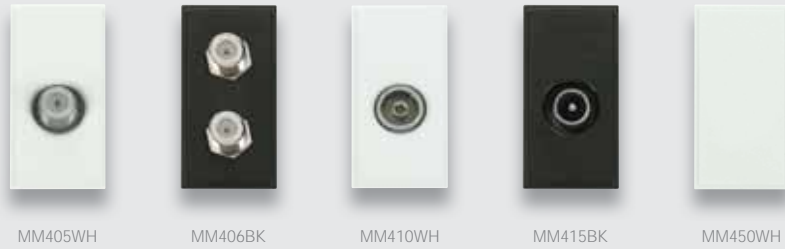
**Back Box Depth:** CL311/312: 40mm Minimum FS311SS/FS312SS: 35mm Minimum  
**Dimensions:** CL311: 80mm x 80mm x 44mm CL312: 140mm x 80mm x 44mm FS311SS: 86mm x 93mm FS312SS: 146mm x 93mm

## New Media™ Modules

The New Media™ modules offer a flexible build solution to a host of individual media transfer requirements. The clip fit grid modules are simple to install in their blank mounting plates.







**TV/Satellite Modules - Single Width (25mm x 50mm)**

- MM405BK** Single Female Satellite Module - Black
- MM405WH** Single Female Satellite Module - White
- MM406BK** Twin Female Satellite Module (F to F Connection) - Black
- MM406WH** Twin Female Satellite Module (F to F Connection) - White
- MM410BK** Single Female Coaxial Module - Black
- MM410WH** Single Female Coaxial Module - White
- MM415BK** Single Male Coaxial Module - Black
- MM415WH** Single Male Coaxial Module - White
- MM450BK** Blank Module - Black
- MM450WH** Blank Module - White

**Dimensions:** MM405: 25mm x 50mm x 23mm MM406: 25mm x 50mm x 15mm  
MM410, MM415: 25mm x 50mm x 23.4mm MM450: 25mm x 50mm x 14mm



All diplexed, triplexed and quad modules require installation of a signal combining distribution amplifier. Not suitable for use in the Republic of Ireland.

**Media Modules - Twin Width (50mm x 50mm)**

- MM420BK** Diplexed TV And Radio Module - Black
- MM420WH** Diplexed TV And Radio Module - White
- MM430BK** Triplexed TV, Radio & Satellite Module - Black
- MM430WH** Triplexed TV, Radio & Satellite Module - White
- MM440BK** Quad TV, Radio, Sat 1 & Sat 2 Module - Black
- MM440WH** Quad TV, Radio, Sat 1 & Sat 2 Module - White

**TV/Satellite Modules - Twin Width (50mm x 50mm)**

- MM425BK** Diplexed TV And Satellite Module - Black
- MM425WH** Diplexed TV And Satellite Module - White

Module	Number of Inputs	Number of outputs	Signals on input 1	Signals on input 2
<b>MM420</b>	1	2	TV, Radio	
<b>MM425</b>	1	2	TV, Sat 1	
<b>MM430</b>	1	3	TV, Sat 1, Radio	
<b>MM440</b>	2	4	TV, Sat 1, Radio	Sat 2

**Dimensions:** 50mm x 50mm x 31.3mm



MM460BK    MM465WH    MM470BK    MM480WH    MM485BK



MM460 (Back)    MM465 (Back)    MM470 (Back)    MM480 (Back)    MM485 (Back)

All New Media™ RJ45 modules are non-screened and are suitable for use with either Type A or Type B wiring conventions.

**Telephone/Data Modules - Single Width (25mm x 50mm)**

- MM460BK** Telephone Master Module - Black
- MM460WH** Telephone Master Module - White
  
- MM465BK** Telephone Secondary Module - Black
- MM465WH** Telephone Secondary Module - White
  
- MM480BK** RJ45 Cat-5e Module - Black
- MM480WH** RJ45 Cat-5e Module - White
  
- MM485BK** RJ45 Cat-6 Module - Black
- MM485WH** RJ45 Cat-6 Module - White
  
- MM470BK** RJ11 Module - Black
- MM470WH** RJ11 Module - White

**Dimensions:** MM460, MM465: 25mm x 50mm x 20.2mm    MM470: 25mm x 50mm x 17.2mm  
 MM480, MM485: 25mm x 50mm x 18mm



MM002BK    MM022WH    MM023BK    MM025WH    MM047BK



MM002 (Back)    MM022 (Back)    MM023 (Back)    MM025 (Back)    MM047 (Back)

**Switch Modules - Single Width (25mm x 50mm)**

- MM002BK** 10AX 2 Way Switch Module - Black
- MM002WH** 10AX 2 Way Switch Module - White
  
- MM025BK** 10AX Intermediate Switch Module - Black
- MM025WH** 10AX Intermediate Switch Module - White
  
- MM022BK** 20A DP Switch Module - Black
- MM022WH** 20A DP Switch Module - White
  
- MM023BK** 20A DP Switch With Neon Module - Black
- MM023WH** 20A DP Switch With Neon Module - White

**13A Fused FCU Modules - Single Width (25mm x 50mm)**

- MM047BK** 13A Fused FCU Module - Black
- MM047WH** 13A Fused FCU Module - White

**Standards:** BS EN 60669, 047: BS 1363  
**Cable Size:** 022 / 023: 1 x 6mm<sup>2</sup> / 3mm x 2.5mm<sup>2</sup>  
**Dimensions:** 25mm x 50mm x 22mm MM047: 25mm x 50mm x 24.7mm



MM010BK



MM020WH



MM030BK



MM033WH



MM038WH



MM515



MM515

**Socket Outlet Modules - Twin Width (50mm x 50mm)**

- MM010BK** 13A UK Socket Module - Black
- MM010WH** 13A UK Socket Module - White

- MM020BK** 16A European Schuko Socket Module - Black
- MM020WH** 16A European Schuko Socket Module - White

Not suitable for use with metal clad boxes CL311 and CL312 (40mm).  
MM020 requires CL087 (1 gang 50mm) or CL088 (2 gang 50mm) if required.

- MM030BK** 16A 110V US Socket Module - Black
- MM030WH** 16A 110V US Socket Module - White

- MM033BK** 15A Round Pin Socket Module - Black
- MM033WH** 15A Round Pin Socket Module - White

- MM038BK** 5A Round Pin Socket Module - Black
- MM038WH** 5A Round Pin Socket Module - White

**USB Charging Modules - Single Width (25mm x 50mm)**

- MM515** 2A USB Charging Module - Black & White  
Supplied with black and white frontplates

**Standards:** 010: BS 1363, 033 & 038: BS 546, 030: UL498, 020: IEC 60884 - SS428 0834  
**Cable Size:** 1 x 6mm<sup>2</sup> / 3 x 2.5mm<sup>2</sup> **Dimensions:** MM010: 50mm x 50mm x 25.6mm MM020: 50mm x 50mm x 40.1mm  
MM030: 50mm x 50mm x 25.5mm MM033: 50mm x 50mm x 41mm MM038: 25mm x 50mm x 27.1mm  
MM515: 25mm x 50mm x 35mm



MM490BK



MM495WH



MM550WH



MM1000



MM490 (Back)



MM495 (Side)



MM501BK

HDMI Outlet with Flexible Connection (80mm Long)

A versatile 50mm x 50mm euro module LED, which clips into a '311' or '312' New Media™ plate. Utilises a standard wiring accessory back box. Please see page k5 for more information on New Media™ plates.

**LED Euromods - Twin Width (50mm x 50mm)**

- MM1000BL** 240V 1W LED Euromod - Blue
- MM1000CW** 240V 1W LED Euromod - Cool White
- MM1000WW** 240V 1W LED Euromod - Warm White

**Speaker Modules - Single Width (25mm x 50mm)**

- MM490BK** RCA/Phono Module (2 Outlets) - Black
- MM490WH** RCA/Phono Module (2 Outlets) - White
- MM495BK** Loudspeaker Module (2 Outlets) - Black
- MM495WH** Loudspeaker Module (2 Outlets) - White

**TV/Satellite Modules - Single Width (25mm x 50mm)**

- MM501BK** HDMI With Fly-Lead Module - Black
- MM501WH** HDMI With Fly-Lead Module - White

**Brush Modules - Single Width (25mm x 50mm)**

- MM550BK** Single Brush Module - Black (Black Bristles)
- MM550WH** Single Brush Module - White (Black Bristles)
- MM550WHWH** Single Brush Module - White (White Bristles)



Modular LED stairlight fitted into a Define® New Media™ plate

Design Registration: 002296483

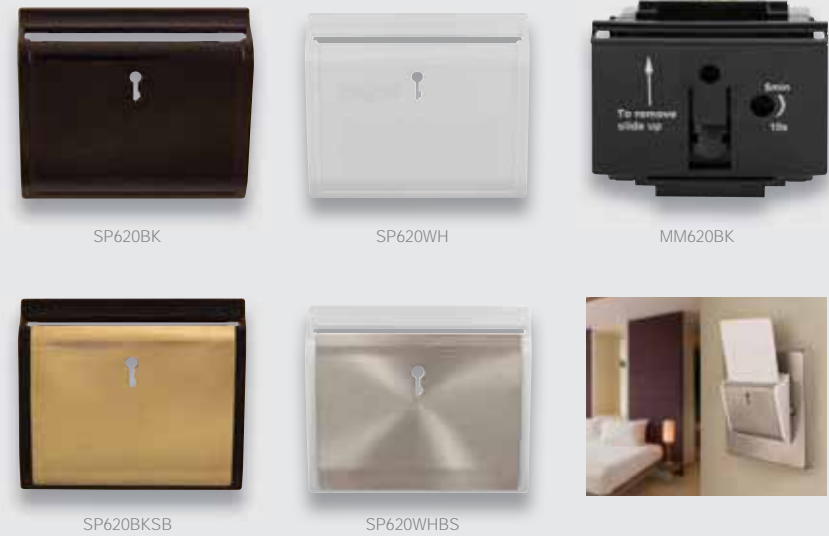
**Dimensions:** MM490: 25mm x 50mm x 18.3mm MM495: 25mm x 50mm x 19.3mm  
MM550: 25mm x 50mm x 12.6mm MM1000: 50mm x 50mm x 31mm



**Media Modules - Single Width (25mm x 50mm)**

- MM300BK** USB Throughput With Fly-Lead Module - Black
- MM300WH** USB Throughput With Fly-Lead Module - White
- MM305BK** VGA With Fly-Lead Module - Black
- MM305WH** VGA With Fly-Lead Module - White
- MM491BK** Triple RCA Module (With Screw Terminals) - Black
- MM491WH** Triple RCA Module (With Screw Terminals) - White
- MM496BK** 3.5mm Audio Jack With Fly-Lead Module - Black
- MM496WH** 3.5mm Audio Jack With Fly-Lead Module - White

**Dimensions:** MM300: 25mm x 50mm x 41mm MM305: 25mm x 50mm x 50mm  
 MM491: 25mm x 50mm x 18.3mm MM496: 25mm x 50mm x 38mm



Full item requires (MM620BK) switch module, (311) unfinished plate and (SP620) hotel key card cover plate, see listed products below:

**Hotel Key Card Switch Module - Twin Width (50mm x 50mm)**

- MM620BK** 10A/6AX Hotel Key Card Timer Switch (Mechanical) Module Only - Black
- Blue LED illuminates when the Key card is removed and the exit time has elapsed. Card not supplied. Select cover plate below.

**Hotel Key Card Switch Module Covers**

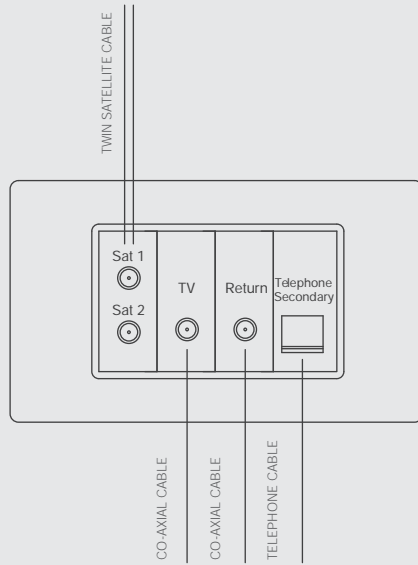
- SP620BK** Black
- SP620BKAB** Black - Antique Brass
- SP620BKBN** Black - Black Nickel
- SP620BKBR** Black - Polished Brass
- SP620BKBS** Black - Brushed Stainless
- SP620BKCH** Black - Polished Chrome
- SP620BKPN** Black - Pearl Nickel
- SP620BKSB** Black - Satin Brass
- SP620BKSC** Black - Satin Chrome
- SP620BKSS** Black - Stainless Steel

**Hotel Key Card Switch Module Covers**

- SP620MTBK** Black - Matt Black
- SP620PW** White - White (Metal)
- SP620WH** White - White (Plastic)
- SP620WHBR** White - Polished Brass
- SP620WHBS** White - Brushed Stainless
- SP620WHCH** White - Polished Chrome
- SP620WHPN** White - Pearl Nickel
- SP620WHSB** White - Satin Brass
- SP620WHSC** White - Satin Chrome
- SP620WHSS** White - Stainless Steel

Please note requires mounting plate \*\*311 (see from page k9)

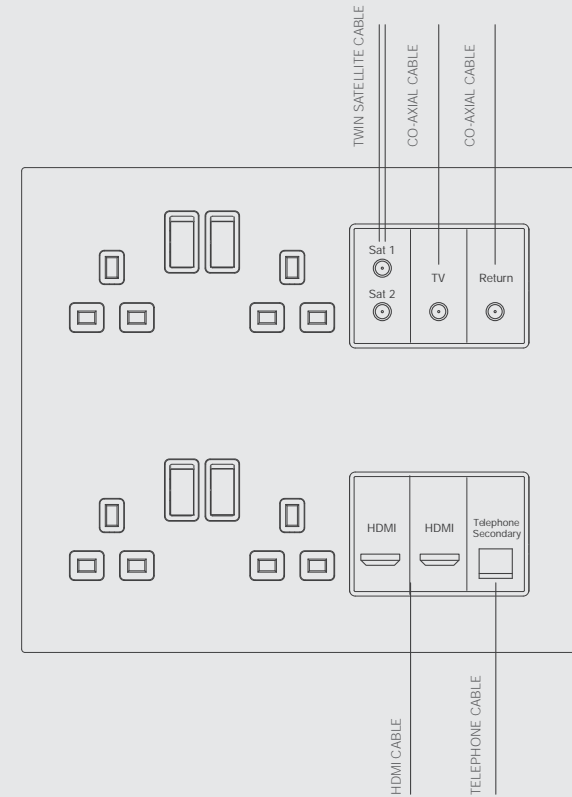
**Time setting:** 10 seconds to 5 minutes  
**Standards:** BS EN 60669  
**Dimensions:** MM620BK: 50mm x 50mm x 32.5mm **Cable size:** 2 x 1.5mm<sup>2</sup>  
 Key card not included. Accepts standard room cards: 85.6 x 53.98mm



**Products Used For This Configuration:**

- 1 x \*\*312 Media Plate
- 1 x MM406 Twin Satellite Module
- 1 x MM415 Co-axial Module
- 1 x MM410 Co-axial Module
- 1 x MM465 Telephone Secondary Module

Here, the input cables from the satellite dish and the TV aerial are connected directly to the rear of each module. The return module is provided to allow the Sky signal to be shared throughout the property using a suitable distribution amplifier. The use of a secondary telephone connection allows for easy connection between the Sky box and the telephone line.



Here, the input cables from the satellite dish and the TV aerial are connected directly to the rear of each module. The return module is provided to allow the Sky signal to be shared throughout the property using a suitable distribution amplifier. The use of a secondary telephone connection allows for easy connection between the Sky box and the telephone line. An HDMI module is provided to facilitate a high definition connection between the Sky box and television.

<b>MM405</b>		<b>Single 'F' Satellite</b>
Connection	Frequency	Insertion Loss (dB) (Typical)
In to Out	5 to 2300 MHz	1.6
Power pass to connection		

<b>MM410</b>		<b>Single IEC Female</b>
Connection	Frequency	Insertion Loss (dB) (Typical)
In to Out	5 to 862 MHz	0.3
Power pass to connection		

<b>MM415</b>		<b>Single IEC Male</b>
Connection	Frequency	Insertion Loss (dB) (Typical)
In to Out	5 to 862 MHz	0.3
Power pass to connection		

<b>MM420</b>		<b>Diplexed TV &amp; Radio</b>
Connection	Frequency	Insertion Loss (dB) (Typical)
In to Radio	87.5 to 230 MHz	2.0
In to TV	47 to 68 MHz	1.5
In to TV	254 to 862 MHz	2.0
Power pass to TV		

<b>MM425</b>		<b>Diplexed TV &amp; Satellite</b>
Connection	Frequency	Insertion Loss (dB) (Typical)
In to TV	47 to 862MHz	2.0
In to Satellite	950 to 2150 MHz	2.5
In to Satellite	2150 to 2400 MHz	3.0
Power pass to satellite		

<b>MM430</b>		<b>Triplexed TV, Radio &amp; Satellite</b>
Connection	Frequency	Insertion Loss (dB) (Typical)
In to Radio	87.5 to 230MHz	3.0
In to TV	47 to 68MHz	2.0
In to TV	254 to 862MHz	2.0
In to Satellite	950 to 2300 MHz	3.0
Power pass to satellite		

<b>MM440</b>		<b>Quad TV, Radio, Satellite 1 &amp; Satellite 2</b>
Connection	Frequency	Insertion Loss (dB) (Typical)
In to Radio	87.5 to 230MHz	3.0
In to TV	470 to 862MHz	2.5
In to Satellite 1	950 to 2300 MHz	3.0
In to Satellite 2	25 to 2400 MHz	1.5
Power pass to satellite 1 & satellite 2		